

ZT Automations, LLC

5) Bed Clamps

This guide covers the assembly of bed clamp components, ZT-KIT-001XX

Written By: Terence Tam



INTRODUCTION

The Bed Clamp Kit can be built in 2 configurations. Configuration one supports the HBP build plate, while configuration two supports a regular round glass plate. In this document, we will be building the HBP version of the bed clamp. All parts in this guide come from ZT-KIT-001XX - Kossel Bed Clamp Kit.



PARTS:

- [TL-625-00124 Plastic Print Bed Mount](#) (3)
 - [M3 Nut](#) (12)
 - [M3x8mm Button Head Cap Screw](#) (6)
 - [TL-625-00125 Plastic Print Bed Clamp](#) (6)
 - [ZT-HWA-00138 Bed Clamp Spring](#) (6)
 - [M3 Fender Washer](#) (12)
 - [ZT-HWA-00127 Shoulder Bolt](#) (6)
-

Step 1 — Background



- The Bed Clamp Kit can be built in 2 configurations
- In this guide, we will build it to support clamping the HBP.

Step 2 — Part Identification



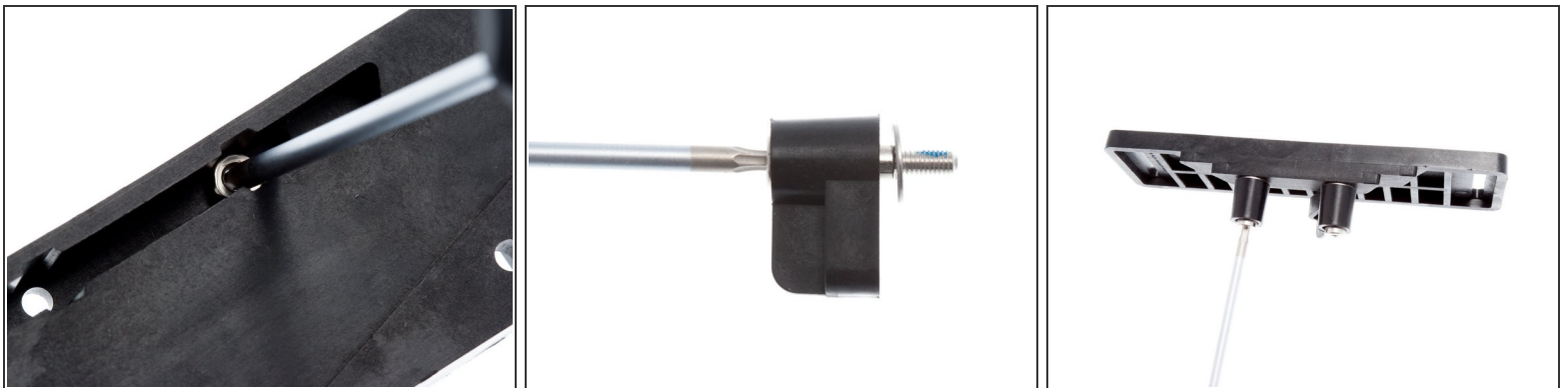
- All parts in this guide come from ZT-KIT-001XX - Kossel Bed Clamp Kit

Step 3 — Load Springs onto Shoulder Bolts



- Create the fastener stack as shown
- Repeat for all 6 clamp pieces.

Step 4 — Insert M3 Nut



- Orient the bed clamp part as shown below. One at a time, load a M3 nut into the highlighted position.
- Terence's Tip: It may be easier to skewer the M3 nut onto the end of the 2mm hex driver, and place the nut down into the recess.

Step 5 — Assembly



- Keeping the clamp piece oriented as shown, load the spring / shoulder bolt / clamp assembly onto the end of the 2mm hex driver and compress the spring.
- Place fender washer onto the threaded portion of the shoulder bolt.
- Approach the bed clamp from the bottom and thread the threaded portion of the shoulder bolt up through the hole, turning to engage the nut
- Repeat for the other side
- Repeat for all 3 pieces

Step 6 — Set Aside



- Set bed clamp aside with the M3 x 8mm button head cap screws and the M3 fender washers for mounting to the Lower Triangle later.