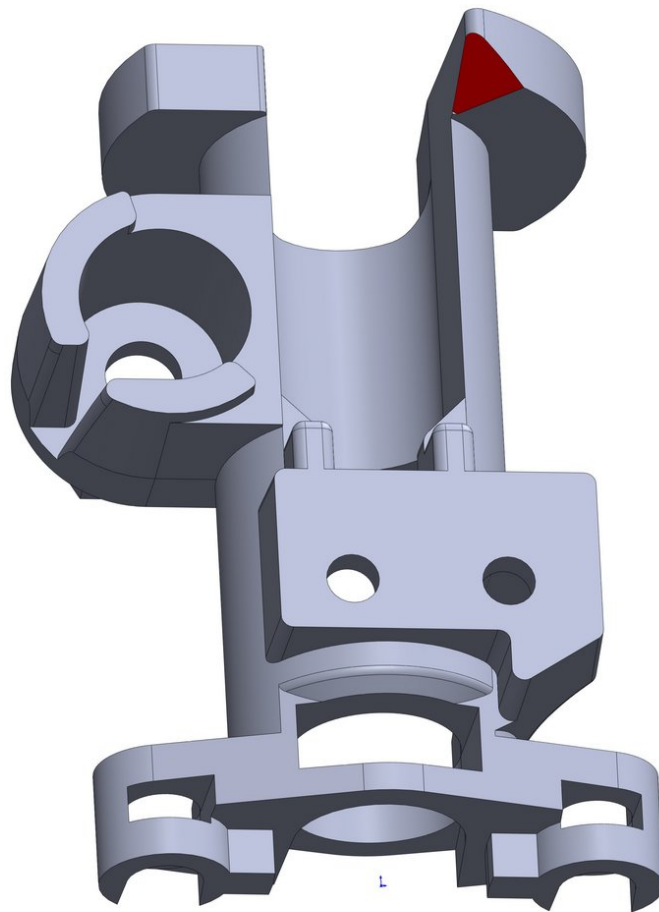


# ZT Automations, LLC

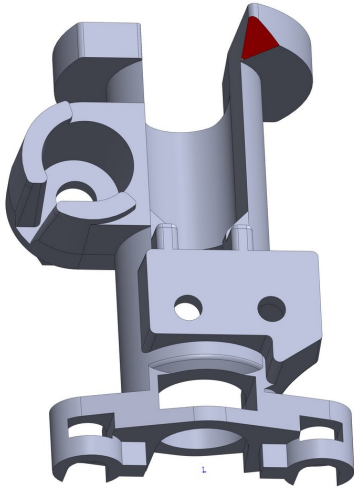
## Modification - Auto Levelling Probe

This guide shows the modification to the auto levelling probe plastic to make probe retraction a lot easier.

Written By: Terence Tam



## Step 1 — Material Removal - Auto Probe Body



- In order to facilitate the retraction of the auto-probe, file away the sharp edge on the bottom of the auto probe body (shown in red on CAD screen shot).
- This will reduce the force required to retract the auto probe.